



Rugged Construction
Proven Performance
Simple Deployment

ASCO Power Technologies™

ASCO SERIES 300
Manual Transfer Switches



ascopower.com

Life Is On

Schneider
Electric

ASCO SERIES 300 Manual Transfer Switches

Flexibility for Every Manual Backup Power Switching Application

When power fails, businesses suffer. For some organizations, a permanent generator is too costly. Instead, a permanent means for quickly connecting a portable or temporary generator that can make economic sense. The ASCO SERIES 300 Manual Transfer Switch, SERIES 300 Quick Connect Panel and SERIES 300 Manual Transfer Switch with Integrated Quick Connects provide flexible solutions for temporary backup power applications, including NEC® 700.3(F) requirements.

Manual Transfer Switch



The ASCO SERIES 300 **Manual Transfer Switch** is the perfect load transfer solution for commercial and municipal applications.

Quick Connect Power Panel



The ASCO SERIES 300 **Quick Connect Power Panel** provides reliable, convenient, and economical connection for a standby generator.

Manual Transfer Switch with Integrated Quick Connects



The ASCO SERIES 300 **Manual Transfer Switch with Integrated Quick Connects** provides a total temporary power connection and transfer solution.

SERIES 300 Manual Transfer Switches

Features

Every ASCO SERIES 300 Manual Transfer Switch provides the following capabilities and features:

- Three-position center-off switch
- Uses ASCO's reliable field-proven technology
- Modular compact design is easy to install and maintain
- Designed to handle motor loads and large inrush currents
- UL 1008 Listing
- Service Entrance models listed to UL 891
- Capacities from 150 to 3000 Amps, up to 600 VAC single or three phase
- Three position switching with center-off position:
 - Switch design prevents simultaneous connection to two power sources
 - Pad-lockable in any position
- Available solid or switched neutral
- Available stainless steel enclosure
- When equipped with a connecting means, complies with NEC® 700.3(F)
- One contact for switch connected to Normal, one contact for switch connected to Emergency.
- Optional features:
 - LED indicators and Form C contacts indicate switch position and source availability
 - Phase rotation monitor ensures proper connections
 - Two-wire engine start switch
 - IO Module for building management system communications
 - Transfer Switch Position
 - Source Availability
 - Engine Start Signal Monitor
 - Phase rotation
- Restriction of Hazardous Substance (RoHS) compliant

Power Knowledge

[Differences Between Manual, Non-Automatic, and Automatic Transfer Switches](#)



SERIES 300 Manual Transfer Switch


SERIES 300 Quick Connect Panel


Features

Whether stand-alone or integrated into a Manual Transfer Switch, ASCO Quick Connect Panels offer the following:

- Input Panels are UL 1008 Listed (400A-800A) and ETL Listed to UL 1008 standards as a Transfer Switch Accessory (1200A-4000A)
- Output Panels are UL 891 Listed (400A-800A) and ETL Listed to UL 891 standards for Switchboards (1200A-4000A)
- Utilizes standard 16 Series Cam-Lok™ quick connectors
- Standard Type 3R enclosure is weather-resistant with or without cables
- Available stainless steel enclosure
- Lockable doors prevent unauthorized entry
- 400 to 4000 Amp models rated up to 600 volts
- Convenient, economical, and reliable connection of alternate power
- Provisions for Trap Key interlocks

Product Details

 [SERIES 300 Quick Connect Power Panel](#)

 [SERIES 300 Dual Purpose Quick Connect Power Panel](#)

 [SERIES 300 Manual Transfer Switch with Quick Connects](#)



Quick-connect panels makes it easy to add a supplement power source.


SERIES 300 Manual Transfer Switch with Integrated Quick Connections

Features

Every ASCO SERIES 300 Manual Transfer switch with integrated quick connections provides the following capabilities and features:

- Enables connection and control of a secondary power source
- Provides a complete UL 1008-listed solution in a single unit
- Standard Type 3R cabinet is weatherproof with or without temporary power cables connected
- Utilizes standard 16 Series Cam-Lok™ quick connectors

Product Details

 [SERIES 300 Manual Transfer Switch with Integrated Quick Connect](#)



Quick Connect Panels use standard 16-Series Cam-Lok™ quick connectors.

Simple and Effective 3-Position Switch



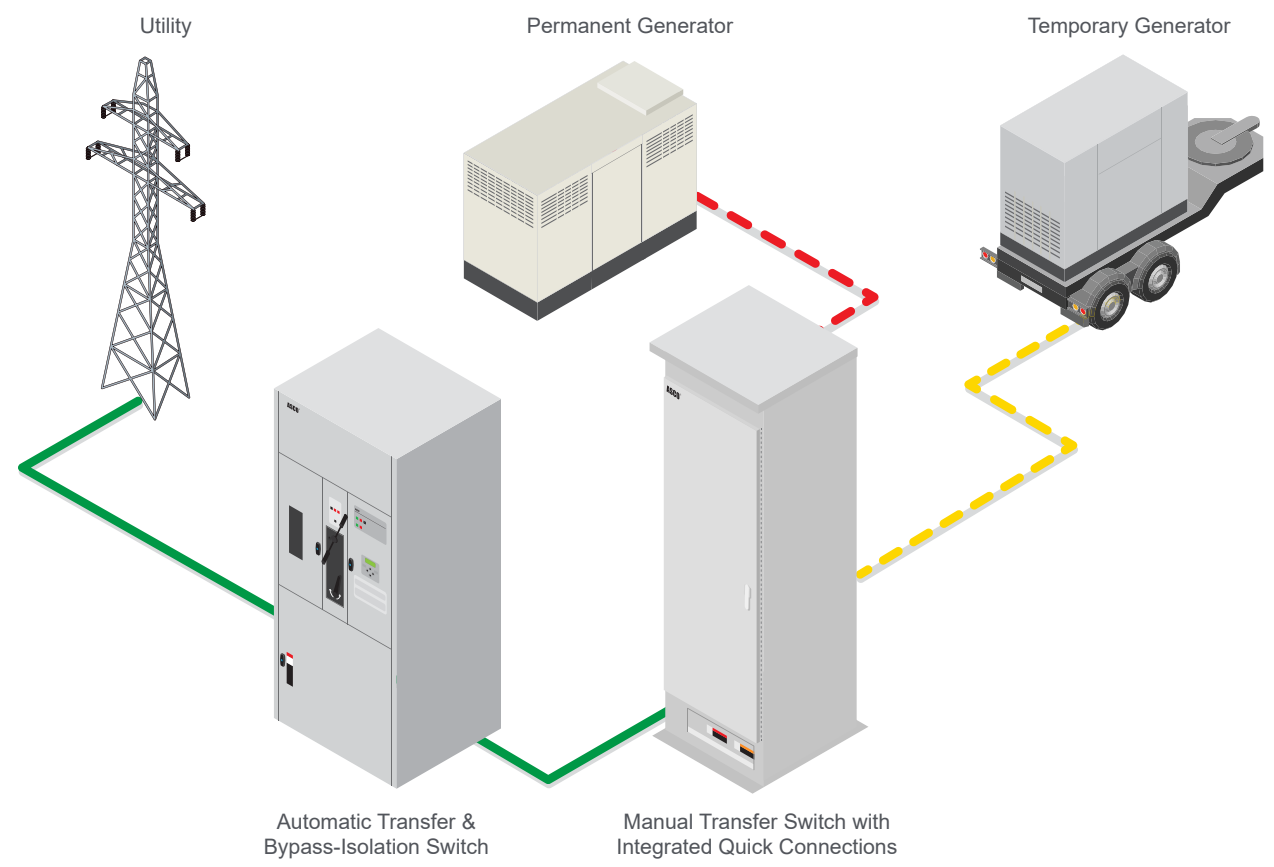
Please note the handle shown above represents 150-1200 Amp models.

The Perfect Solution for NEC® 700.3 Requirements

At facilities where backup power must be available even when servicing a facility's sole generator, National Electrical Code® Article 700.3(F) requires that a permanent switching means be provided to connect an interim source of secondary power. For facilities without a permanent backup generator, a Manual Transfer Switch and a connecting means would allow the connection of a temporary or portable generator when needed, without the cost of a permanent engine-generator.

Power Knowledge

NEC Requirement for Permanent Manual Switching Means



SERIES 300 Applications



When only a single permanent generator provides backup power, the NEC® now requires a means for connecting a portable generator.



Lost power disrupts critical services to customers and businesses.



A power interruption can hinder emergency response and interrupt municipal utility services.



Power interruptions disrupt operations, damage equipment and ruin refrigerated inventory.

SERIES 300 Ordering Information

MTS Ordering Information

J	03MTS	A	3	0600	N	0X	M
Frame	Product	Neutral Code	Phase Poles	Amperes	Voltage Code	Group Code	Enclosure ^{3,4}
J = 150 - 600A H = 800 - 1200A G = 1600 - 3000A	03MTS ¹ - Manual Transfer Switch 03MUS - Service Entrance Manual Transfer Switch 03MTQ - Manual Transfer Switch with Quick Connects 03MUQ - Service Entrance Manual Transfer Switch with Quick Connects	A - Solid Neutral B - Switched Neutral	2 3	0150 0200 0230 ² 0260 ³ 0400 0600 0800 1000 1200 1600 2000 2600 3000	C - 208 D - 220 E - 230 F - 240 H - 380 J - 400 K - 415 L - 440 M - 460 N - 480 P - 550 Q - 575 R - 600	00 - No Accessory 0X - Accessory 0Z - Custom Accessory	C - Type 1 M - Type 3R Secure N - Type 4 Secure S - Type 3RX Secure (316) SS V - Type 4X Secure (316) SS

Notes:

1. Voltage code is not required for 03MTS without 170 accessory.
2. For Service Entrance switches, rating is 225 Amps.
3. MTQ with quick connects are available only in M and S enclosure
4. Type 4 Enclosures are available up to 800A

Catalog Information

3QC	N	C	A	A	3	0400	F	00	F
SERIES	Input/Output	Connector Type	Ground ¹	Neutral	Poles/Phase ²	Amps	Volts/Color Code	Accessories	Enclosure
3QC	N = Input U ³ = Output	C = Cam-Lok	A = 100% N = minimum of 25% grounding ampacity	0 = none A = 100% Rated Neutral	2 3	0400 0800 1200 1600 2000 ³ 2400 ³ 2800 ³ 3200 ³ 4000 ³	F ≤ 240V Black, Red, Blue N ≤ 480V Brown, Orange, Yellow R ≤ 600V Black, Black, Black	00 = None	F = Type 3R Secure S = 316 Stainless Steel Type 3R Secure

Notes:

1. 100% Rated ground standard on 400A-1600A units. Minimum of 25% rated ground on models 2000A and above.
2. 2-Pole only available for 240V up to 1600A.
3. Output Panels contain female connectors with flip covers.

SERIES 300 Accessories

ASCO SERIES 300 Manual Transfer Switch Accessories

Accessories	Description
44A	Strip heater with thermostat prevent condensation and ice formation of water. External 120V power source required
44G	Strip heater with thermostat wired to load terminals
73	Surge Suppressor Rated 65kA

ASCO 300 Manual Transfer Switch User Interface/Annunciation Accessories

170	B	P	1
Accessory Description	User Interface/Controls	Phase Rotation	IO Module
All 170 Accessories Include LEDs and Form C Contacts For: <ul style="list-style-type: none"> • Source 1 Available • Source 2 Available • Connected to Source 1 • Connected to Source 2 • Disconnected Position • External 24 VDC Connection 	B – Base (Source Indication Only. No engine start switch or common alarm) E – Maintained Engine Start Switch/Output With Common Alarm Input/LED/Contact K – Keyed Maintained Engine Start Switch/Output with Common Alarm Input/LED/Contact	P = Phase Rotation Monitor (LED) Blank = none	1 = IO Module Blank = None

Quick Connect Panel Information

Rating	Standard Connection Type	Mounting	Dimensions	Shipping Weight (lbs)	Internal Connection
400A	Cam-Lok (1 row)	Wall Mount	24"w x 32"h x 11"d	85	Dual 2 AWG - 600 MCM Lugs
800A	Cam-Lok (2 rows)	Wall Mount	24"w x 32"h x 11"d	95	Dual 2 AWG - 600 MCM Lugs
1200A	Cam-Lok (3 rows)	Floor Mount	35"w x 56"h x 28"d	475	Copper Bus with ½" holes
1600A	Cam-Lok (4 rows)	Floor Mount	35"w x 56"h x 28"d	495	Copper Bus with ½" holes
2000A	Cam-Lok (5 - 9 rows)	Pad Mount	31"w x 39"h x 50"d	205	Single 2 AWG - 600 MCM Lugs
2400A - 4000A	Cam-Lok (6 - 10 rows)	Pad Mount	48"w x 39"h x 50"d	Varies based on Amperage	Single 2 AWG - 600 MCM Lugs



ASCO Power Technologies - Global Headquarters
160 Park Avenue
Florham Park, NJ 07932
Tel: 800 800 ASCO

www.ascopower.com
customercare@ascopower.com